



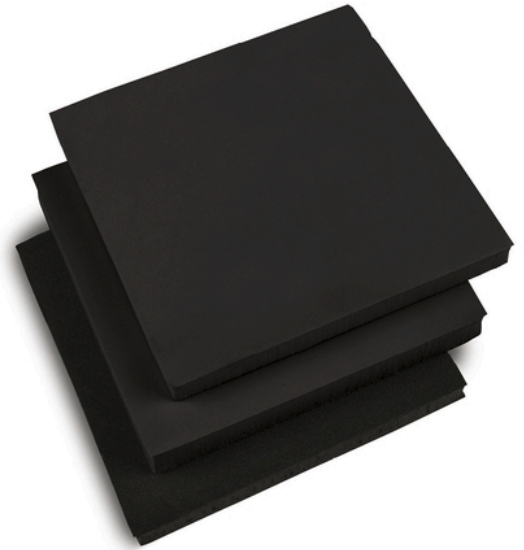
DRIVEN BY PERFORMANCE

# EnsoLite EFO

Engineered semi-closed cell solution for space filling and sealing against air, dust, heat, and noise.

- // Super soft firmness
- // Good sound absorption properties
- // Excellent resistance to ozone, weather, and UV exposure
- // Broad service temperature range
- // Meets OEM specifications

[www.armacell.com](http://www.armacell.com)



 **armacell**<sup>®</sup>  
ArmaComp<sup>®</sup>

## TECHNICAL DATA - ENSOLITE EFO

Brief description	EFO is an EPDM, super soft, crushed foam product produced in continuous rolls. This product meets ASTM D 1056 1A0 requirements with an exception to elevated temperature compression set. This product meets various automotive specifications and is an excellent solution for low temperature, outdoor and/or noise reduction applications.
Product colour range	Black
ASTM D1056 Designation	1A0*
ASTM D1056 Exception	*50% compression set at elevated temperature 70°C (158°F)
Cell structure	Semi-closed
Form	Roll
Polymer	EPDM
Markets	Automotive

Source	Specification	Comments
<b>Approvals and specifications</b>		
General Motors	GMW 17408 Class I Type I	Interior & Exterior Applications
Stellantis (FCA / Chrysler)	MSAY 430 MS.90145 Type 1	
Stellantis (FCA / Chrysler)	MSAY 550 MS.90145 Type 2	
MAHLE	GN AR 06220 [MAHLE GN AR 06346] Par 6.13	Previously Delphi SD2 207 Par 6.13

Property	Value / Assessment				Standard / Test method
<b>Temperature range</b>					
Service temperature	Min. °C	Min. °F	Max. °C (intermittent)	Max. °F (intermittent)	ASTM D1056
	-75	-103	121	250	
<b>Flammability</b>					
Flammability test (burn rate)	3.94 in/minute (100 mm/minute) max Passes at 0.125 in (3.18 mm) and higher				FMVSS 302
<b>Physical attributes</b>					
Density	4.37 - 6.24 lb/ft <sup>3</sup> 70 - 100 kg/m <sup>3</sup>				ASTM D1056
<b>Mechanical properties</b>					
Compression set (Room temperature)	5% max				ASTM D1056
Compression set (Elevated temperature)	80% max				ASTM D1056
Tensile strength	16 psi min 110 kPa min				ASTM D412 (Die A)
Elongation	150% min				ASTM D412 (Die A)
Tear strength	4.85 lb/in min 0.85 kN/m min				ASTM D624 (Die C)
<b>Compression deflection</b>					
Compression deflection 25%	0.80 psi max 5.51 kPa max				ASTM D1056
Compression deflection 50%	1.20 psi max 8.27 kPa max				ASTM D1056

Property	Value / Assessment	Standard / Test method
Compression deflection 50% - 60 sec hold	0.725 psi max 5.0 kPa max	ISO 3386-1
Change in 25% compression deflection after heat aging <sup>1</sup>	<2 psi (13.8 kPa)	ASTM D1056

<sup>1</sup>If this grade after aging still falls within the compression-deflection requirement of <2 psi (<13.8 kPa), it shall be considered acceptable even though the change from the original is greater than ±20%.

All data and technical information are based on results achieved under the specific conditions defined according to the testing standards referenced. Despite taking every precaution to ensure that said data and technical information are up to date, Armacell does not make any representation or warranty, express or implied, as to the accuracy, content or completeness of said data and technical information. Armacell also does not assume any liability towards any person resulting from the use of said data or technical information. Armacell reserves the right to revoke, modify or amend this document at any moment. It is the customer's responsibility to verify if the product is suitable for the intended application. The responsibility for professional and correct installation and compliance with relevant building regulations lies with the customer. This document does not constitute nor is part of a legal offer to sell or to contract.

At Armacell, your trust means everything to us, so we want to let you know your rights and make it easier for you to understand what information we collect and why we collect it. If you would like to find out about our processing of your data, please visit our Data Protection Policy.

Trademarks followed by © or ™ are trademarks of the Armacell Group. © Armacell, 2025. All rights reserved.

ArmaComp | EnsoLite EF0 (Global) | TDS | 012025 | en-CA

## ABOUT ARMACELL

---

As the inventor of flexible foam for equipment insulation and a leading provider of engineered foams, Armacell develops innovative and safe thermal and mechanical solutions that create sustainable value for its customers. Armacell's products significantly contribute to global energy efficiency making a difference around the world every day. With more than 3,300 employees and 25 production plants in 19 countries, the company operates two main businesses, Advanced Insulation and Engineered Foams. Armacell focuses on insulation materials for technical equipment, high-performance foams for acoustic and lightweight applications, recycled PET products, next-generation aerogel technology and passive fire protection systems.

For more information, please visit:  
[www.armacell.com](http://www.armacell.com)

